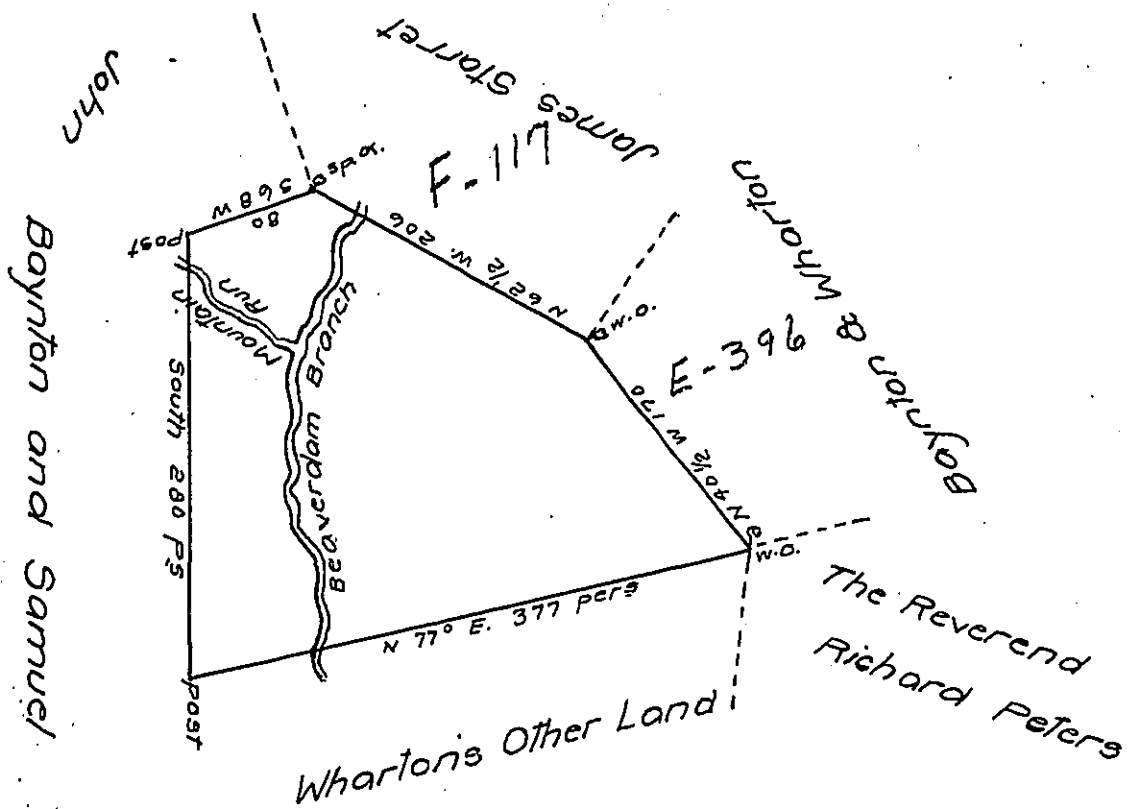


7/7/01



A Draught of a tract of land situate on the Beaverdam Creek and Mountain Run in the County of Cumberland called the Meadow Ground containing four hundred and sixteen acres and a quarter and the usual allowance of six acres $\frac{1}{4}$ C^t for roads &c. Surveyed for John Boynton and Samuel Wharton in pursuance of a Warrant dated the 28th July 1766.

$\frac{1}{2}$ Richard Tea Dep^y Survey^r

To John Lukens Esq^r Survey^r Gen.^o

Now in Allegheny Co. Township Huntingdon. County.

IN TESTIMONY that the above is a copy of the original remaining on file in the Department of Internal Affairs of Pennsylvania, made conformably to an Act of Assembly approved the 16th day of February, 1833, I have hereunto set my Hand and caused the Seal of said Department to be affixed at Harrisburg, this Eighteenth day of November 1919

Jas. F. Woodruff
Secretary of Internal Affairs.